

FleetTrack

Fleet Tracking System

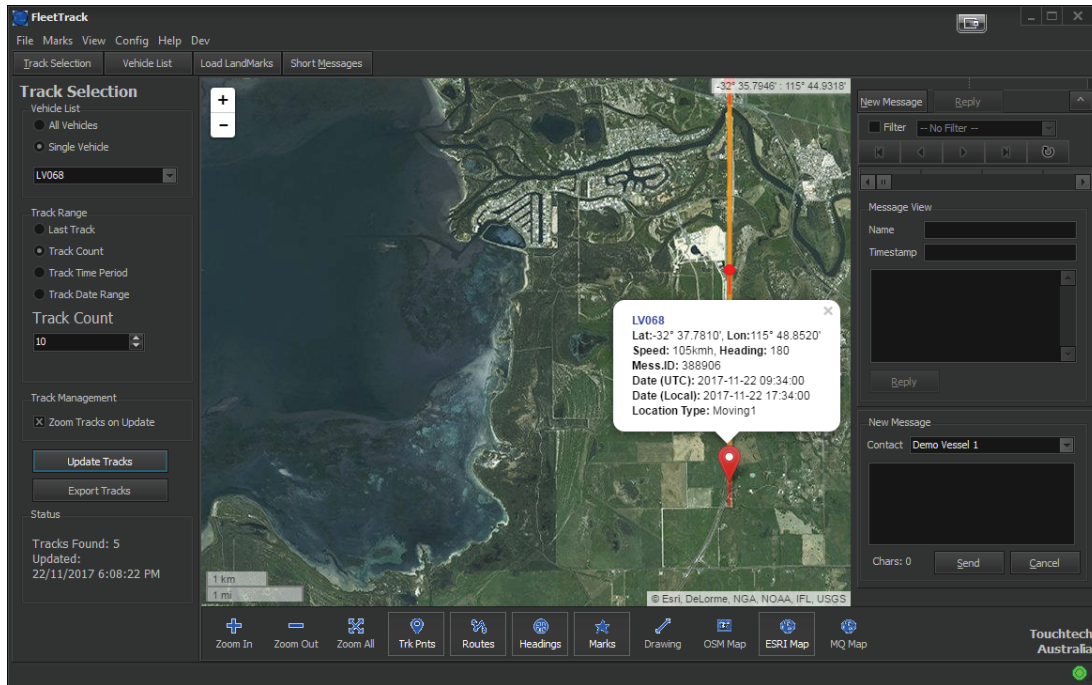


Touchtech
AUSTRALIA

“Innovation and Application”

FleetTrack

Fleet Tracking Systems



SkyWave IDP-782

Automatically switch between mobile coverage when available and satellite in remote areas



SkyWave IDP-680

Satellite Communications Terminal
Vehicle tracking and fixed industrial equipment monitoring

Transport and mobile equipment tracking system that records the location, movement and speed at any geographic location including remote areas

BENEFITS

- ✓ Vehicle fleet tracking at all times
- ✓ Equipment tracking through live GPS location updates
- ✓ Location, speed and distance display
- ✓ Ability to identify vehicles and personnel
- ✓ Maintenance scheduling reduces risk of costly large scale repairs
- ✓ Enhanced Security. Improved driver, vehicle and cargo security with reliable, always-on communications

FEATURES

- ✓ Records event data in near real time of vehicle, using Mobile and GPS technology
- ✓ All data downloaded to client server or other server and displayed on any GIS map, allowing for integration with existing GIS systems.
- ✓ Ability to be customised to client requirements

UNPARALLELED CUSTOMER SUPPORT

WA designed for Australian conditions, FleetTrack is supported locally and throughout Australia for industries including transportation and distribution, heavy equipment, oil and gas, maritime and government agencies

Distributed by Earth 2 Ocean
121 Forrest Ave. Bunbury WA 6230
Phone 08 9721 1730 | Fax 08 9721 2763
Email sales@touchtech.com.au

www.touchtech.com.au

Touchtech
AUSTRALIA
"Innovation and Application"